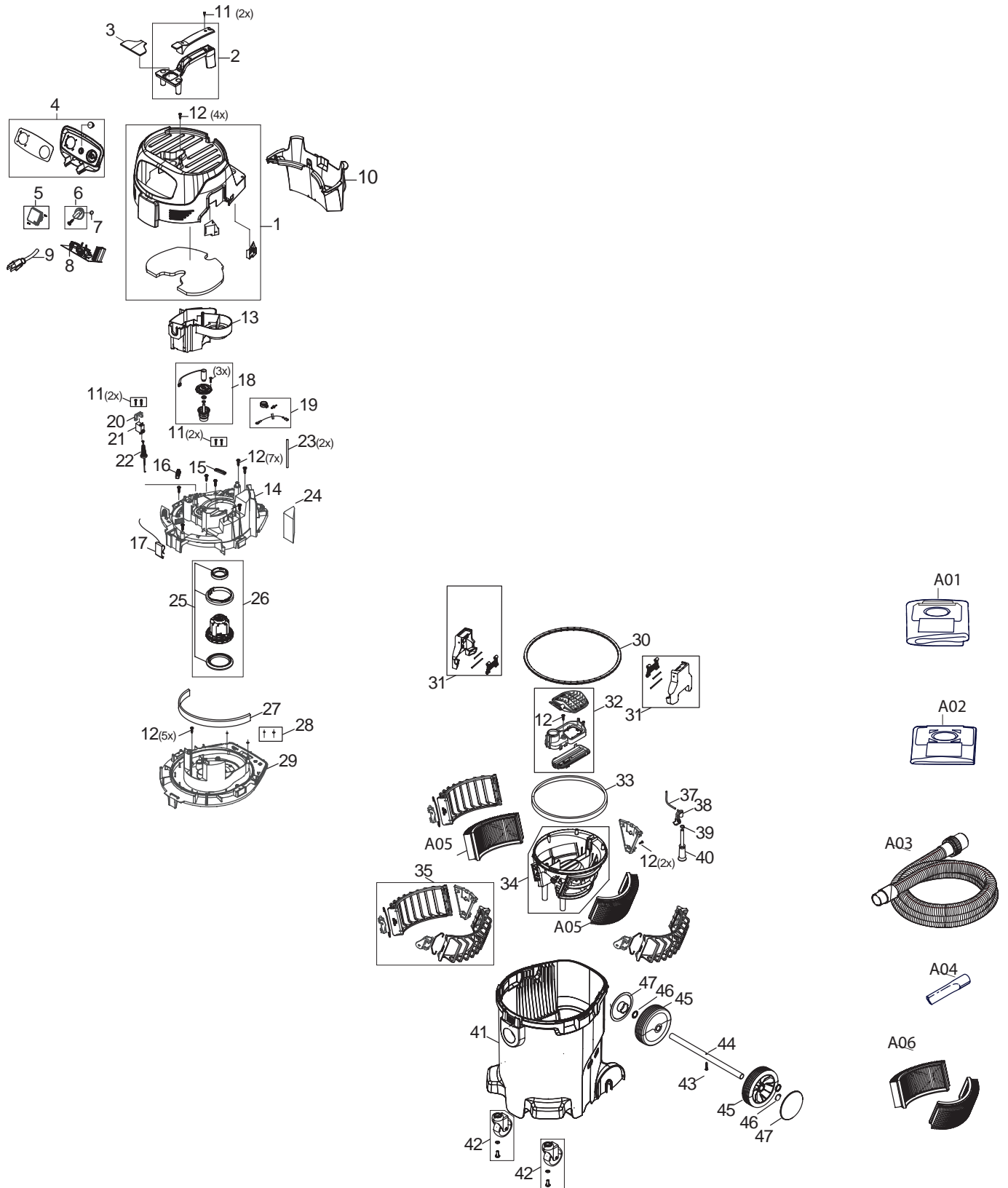




10 - 2013

VC4710

12 GALLON DUST EXTRACTOR



Item No	Type	Part No	Description	Qty	Unit
1		W107406157	COVER	1	PC.
2		W302004019	HANDLE	1	PC.
3		W107401369	HANDLE COVER	1	PC.
4		W107406158	SWITCH BOARD 21	1	PC.
5		W302004338	OUTLET BOX	1	PC.
6		W909100222	ROTARY KNOB	1	PC.
7		W9868	O-RING	1	PC.
8		W107406161	AUTO ON-OFF PRINTED CIRCUIT BOARD 120V - XC	1	PC.
9		W302000882	POWER CORD W/PLUG AWG 16/3x8, SJ	1	PC.
10		W302004026	TOOL BOX	1	PC.
11		W302004032	SCREW 3.5X18	6	PC.
12		W302004029	SCREW 5X18	19	PC.
13		W302004015	AIRGUIDE	1	PC.
14		W107406162	CLAMPINGPLATE XC	1	PC.
15		W302004030	STRAP FOR CABLE	1	PC.
16		W302004031	DISTRIBUTION STRIP	1	PC.
17		W107406163	CONTACT SPRING	1	PC.
18		W107400292	MAGNET XC	1	PC.
19		W107402836	EARTH CLIP FOR MAGNET	1	PC.
20		W107400289	SERVO BRACKET XC	1	PC.
21		W107400290	SERVO for XC	1	PC.
22		W107400276	SERVO WIRE XC	1	PC.
23		W107400309	HOSE 3X1.5 TURBINE SIDE XC - 21-1/4"	2	PC.
24		W302004045	SOUND INSULATION OUTLET	1	PC.
25		W302003385	SEALING SET	1	PC.
26		W302003388	MOTOR SET 110V-120V	1	PC.
27		W302004010	SOUND INSULATION FRONT	1	PC.
28		W107400274	O-RING XC KIT	1	PC.
29		W107406164	BASEPLATE XC	1	PC.
30		W107400056	GASKET FOR CONTAINER	1	PC.
31		W107400301	CONTAINER CLAMP	2	PC.
32		W107400277	XC FLAP KIT	1	PC.
33		W107400283	SEALING FOR XC	1	PC.
34		W107400302	FILTERBRACKET XC	1	PC.
35		W107402255	FILTER MOUNTING KIT XC	1	PC.
37		W107400855	HOSE D3X1.5 TURBINE SIDE XC	1	PC.
38		W107400310	MOUNT FOR WATERLEVEL CONTROL1	1	PC.
39		W107400285	BAND CLAMP FITTING	1	PC.
40		W107400303	HOSE FILL LEV. SHUTOFF	1	PC.
41		W107406159	CONTAINER	1	PC.
42		W302004059	CASTER Ø 75x100	2	PC.
43		W107400063	SCREW 5X35	1	PC.
44		W302004022	WHEEL AXLE	1	PC.
45		W302000639	WHEEL Ø150	2	PC.
46		W47302	CLAMPING RING	2	PC.
47		W302001322	HUB CAP - BLACK	2	PC.
48		W107406160	CARTON F/VC4710	1	PC.

ACCESSORIES

- See Catalogue or visit www.makita.ca for more accessories -

A01	P-78293	DUST BAG, 5/PK	1	PC.
A02	P-70297	PLASTIC DISPOSAL BAGS 5/PK	1	PC.
A03	P-79865	ANTI STATIC HOSE 1-3/8"	1	PC.
A04	P-80005	CREVICE NOZZLE, PACKAGED	1	PC.
A05	P-79843	FLAT FILTER ELEMENT, 2/PK	1	PC.
A06	P-79859	HEPA FILTER ELEMENT, 2/PK	1	PC.